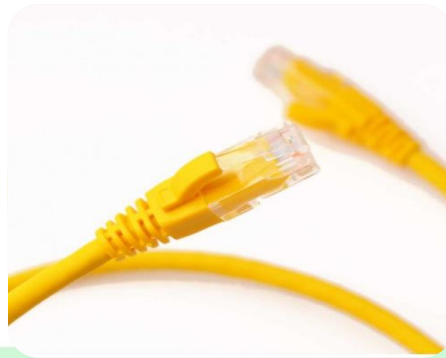


L-NS540

Lewins Line

L-NS540 UTP Patch Cord Cat6

2 MTR



Product Classification

Portfolio

LEWINS-LINE®

Product Type

Twisted pair cable

Regional Availability

Asia | Australia/China |



©2020 LEWINS-LINE, Inc. All rights reserved. All trademarks identified by ® or ™ are registered trademarks, respectively, of LEWIN-LINE. All specifications are subject to change without notice. See www.Lewins-line.com for the most current information.

Revised: February 02, 2020

Lewins Line**Technical Information**

Cable Type	U/UTP Patch Cord 2 MTR-PVC COPPER STRANDS		
Conductor	MATERIAL	PURE COPPER	
	[MM] SIZE	7/0.18MM	+0.003MM
			-0.003MM
Insulation OF Cords	MATERIAL	HDPE	
	DIAMETER	0.94±0.05mm	
Sheath / Jacket	THICKNESS	>0.485mm	
	OUTER DIAMETER	5.7±0.2mm	
	SURFACE	SMOOTHLY	
	MATERIAL	PVC	
	COLOR	YELLOW	
	CROSS SKELETON	4.8mmX4.8mm	
Cable Print	CABLE PRINT	According to buyer demand	
	height of words	3.0±0.3mm	
	color of words	black	
	gap	≤±0.5 % · 1M	



Lewins Line

Color OF Cores	1) WHITE /BLUE		2) WHITE / ORANGE
	3) WHITE / GREEN		4) WHITE / BROWN
Packing	PER CABLE IN PER BAG + EXPORTING CARTON		
Carton Size	48*31*27 cm		
Length Of Cable	0.23 CM		
Rib Cord	NOT	DRAIN	NOT
Test Standard	FLUKE test DTX-5000		
Physical properties of outer sheath/JACKET	BEFORE AGING Tensile strength [Mpa]≥13.5 elongation.[%]]≥150		
	AFTER AGING Tensile strength (Mpa)≥12.5 elongation[%]]≥125		
	AGING CONDITION [°C×hrs] 100°C×24h×7d		
	COLD BEND [-20°C±2°C×4 NON -CRACKING		
Electrical Performance[20°C]	1.0-100.0 Characteristic Impedance[OHM] 100±15		
	1.0-100.0MHz Delay Skew 20°C[ns/100m] ≤45		
	DCR 20°C OHM /100m]max ≤15.5		
	Resistance Unbalance [%]max ≤5.0		

Regulatory Compliance/Certifications

Quality Management System in line with

GB/T19001-2016 IDT ISO9001:2015 Standard Scope Certification

Digital Communication Cable (Communication Wire) Production

